

College of
Non Musculoskeletal
Osteopathy

CNMO PRACTICALS SPACE AND ACCOMODATION

Caroline's Contact - +447508843232

ADDRESS: 31 HAWLEY STREET, COLNE. BB8 8BA.

Parking: There is plenty of free / unlimited on-street parking in the area and there is a small free carpark at the bottom of the street for day use.

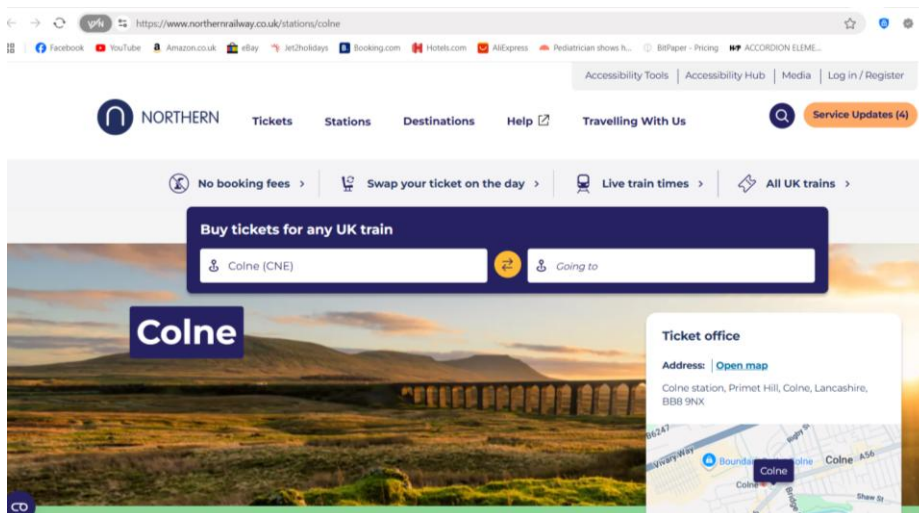
[GOOGLE MAPS LINK HERE](#)



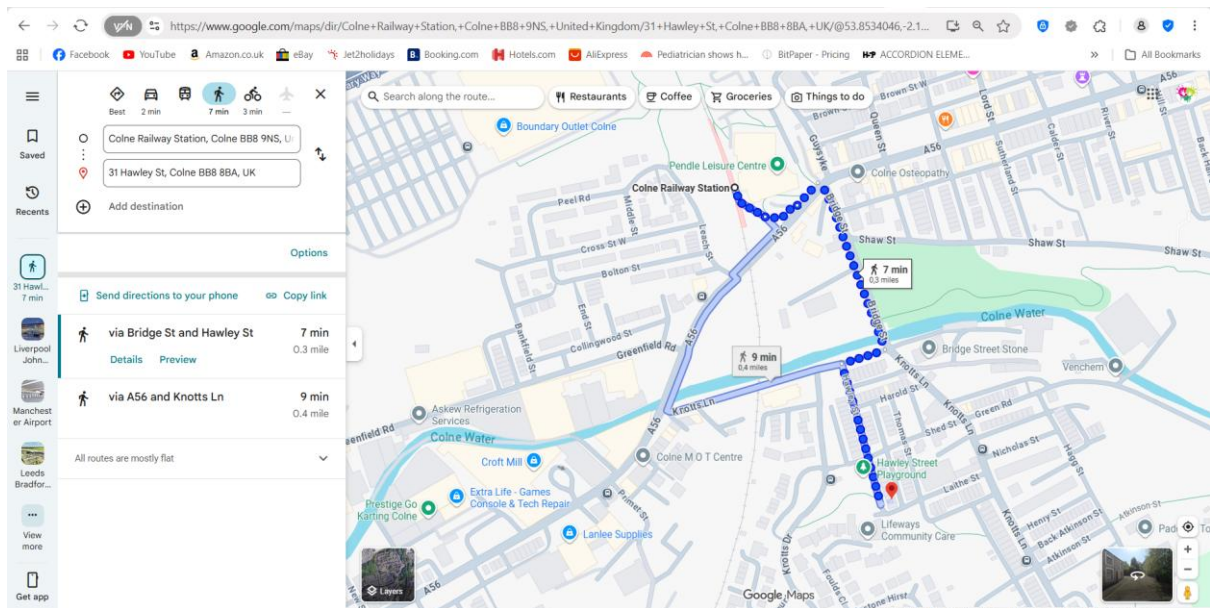
NEAREST TRAIN: COLNE STATION – [northern railway website link here](#)

[Transpennine service links here.](#)

TRAIN OPTIONS – WEST COAST MAINLINE TO PRESTON, THEN CHANGE TO NORTHERN LINE.



WALKING FROM THE TRAIN STATION IS 7 minutes (no bus directly from the station).

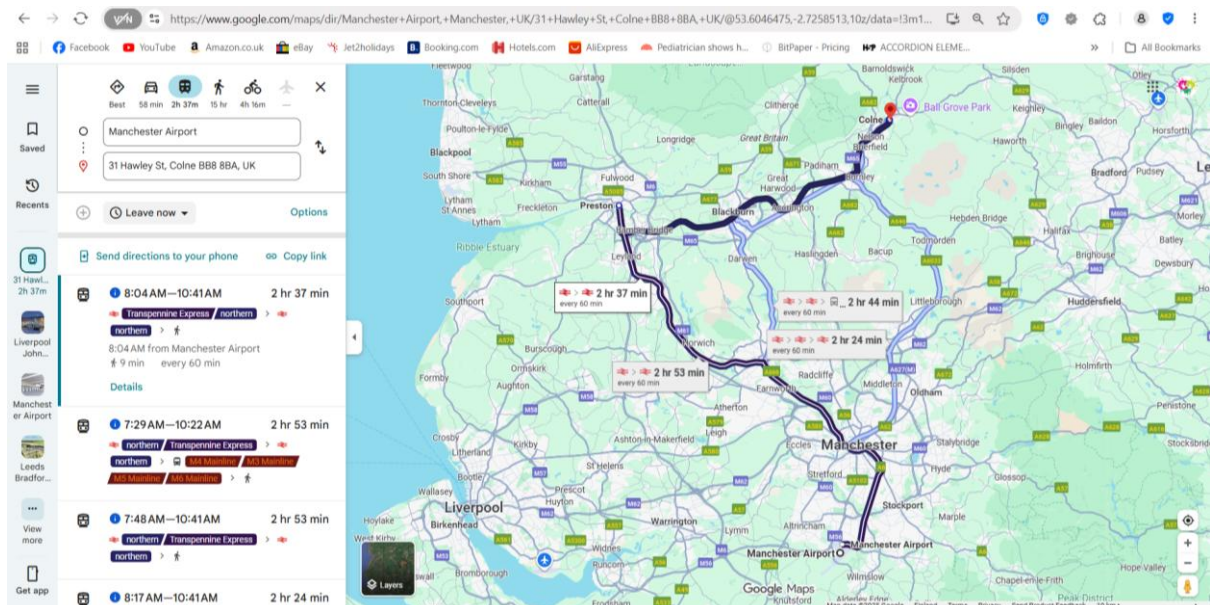


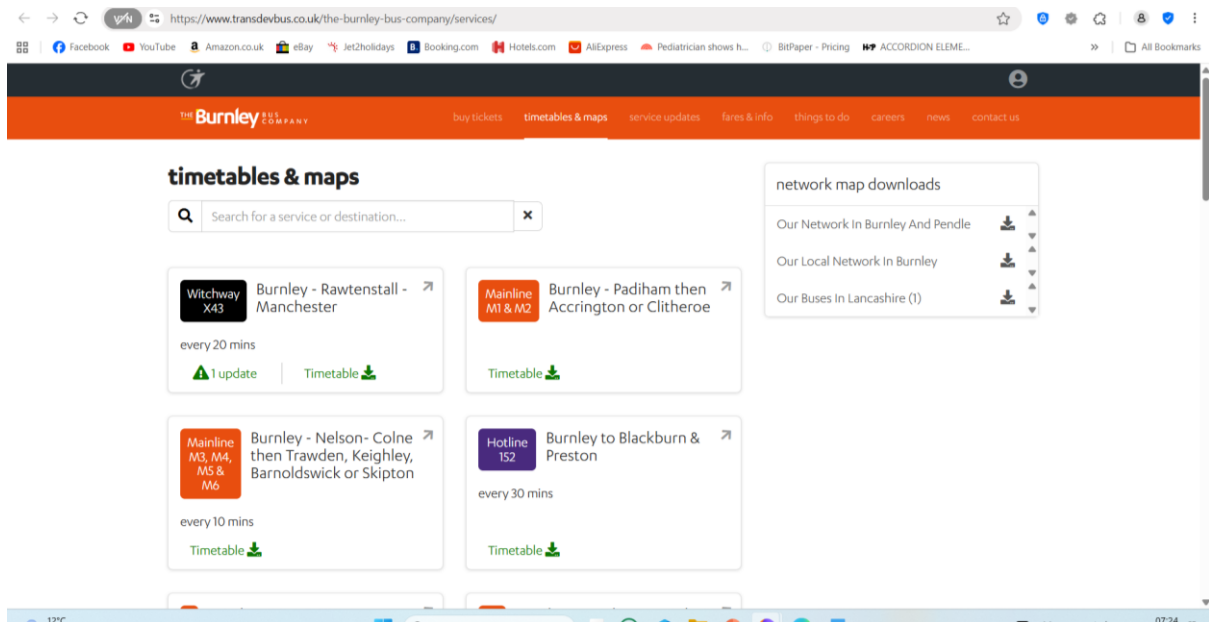
TRAINS FROM WALTES AND SOUTH WEST – CHANGE AT CREWE, GIVES YOU BETTER OPTIONS.

BUSES from Manchester airport:

FROM MANCHESTER AIRPORT, YOU CAN GO BY BUS TO BLACKBURN OR BURNLEY FIRST (don't go via Preston, takes too long), THEN ONTO COLNE – the Transdev service runs locally. You will need to change buses / services to complete the journey.

<https://www.transdevbus.co.uk/the-burnley-bus-company/services/>





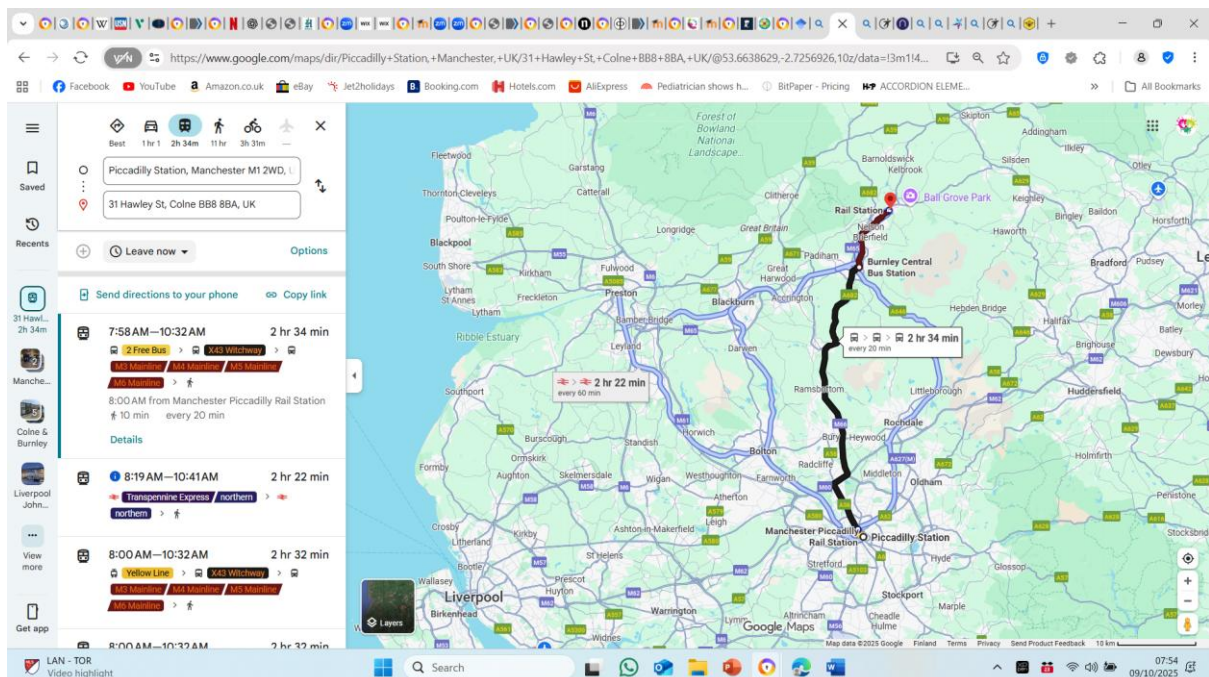
BUSES

From Manchester centre (if you took train to Manchester Picadilly for example).

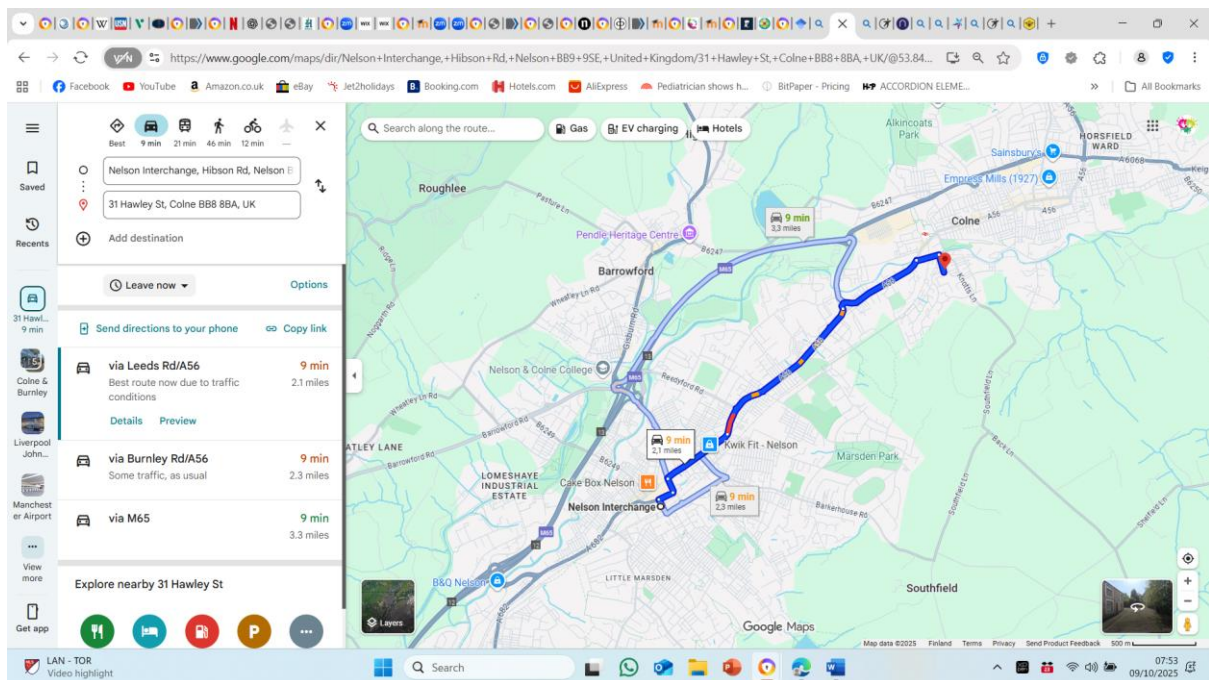
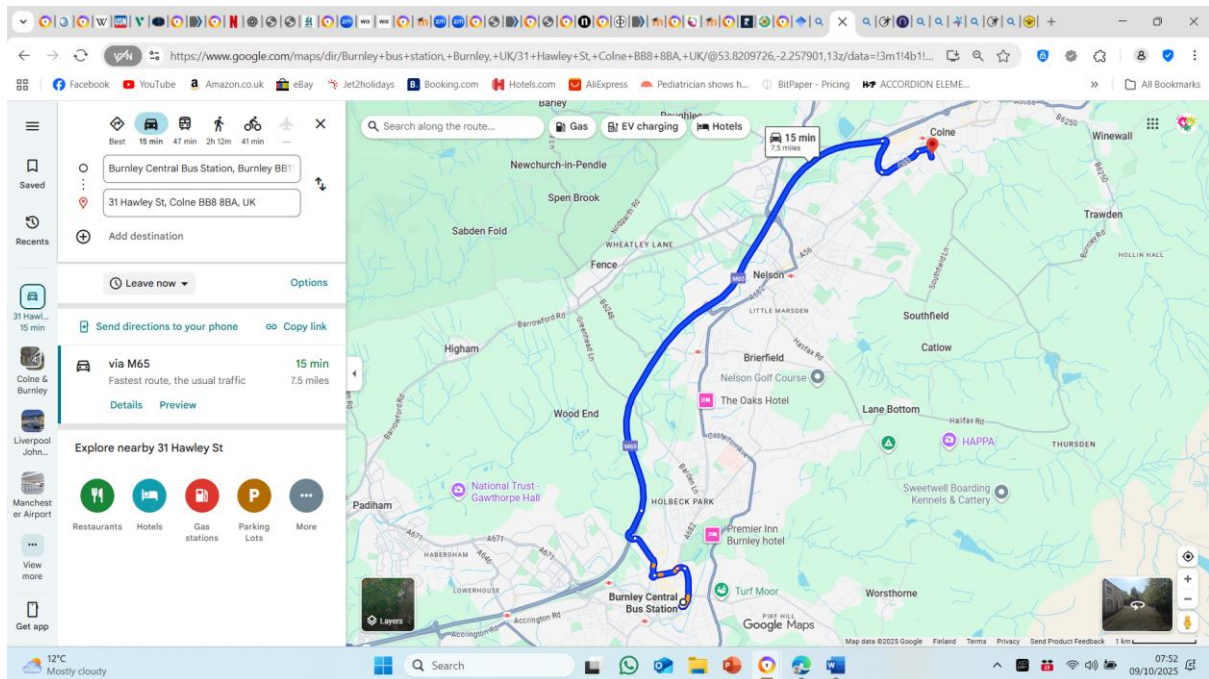
The best route is the Witchway (X43) service, which goes to Nelson, or (stops at a prior stop Burnely). If you get off at Nelson it's a shorter local bus journey, or a taxi.

<https://tfgm.com/travel-updates/live-departures/bus/x43-nelson>

<https://www.transdevbus.co.uk/rosso/services/witchway-x43/>

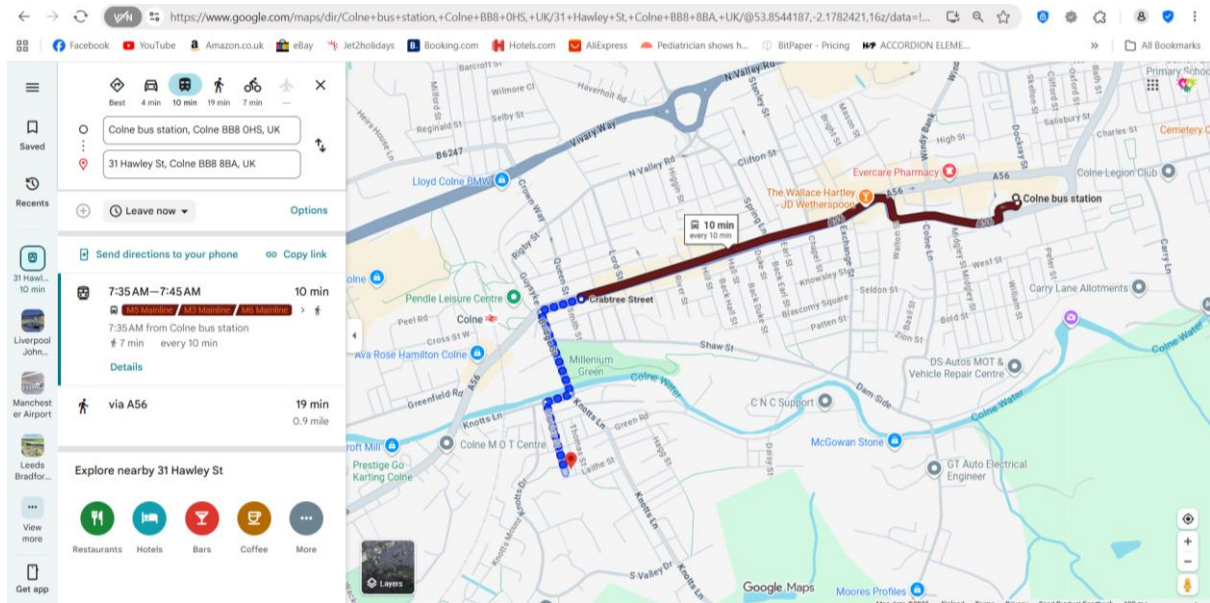


Local taxi times from Burnley, or Nelson Bus Stations:



WALKING / BUS FROM COLNE BUS STATION TO THE ACCOMMODATION:

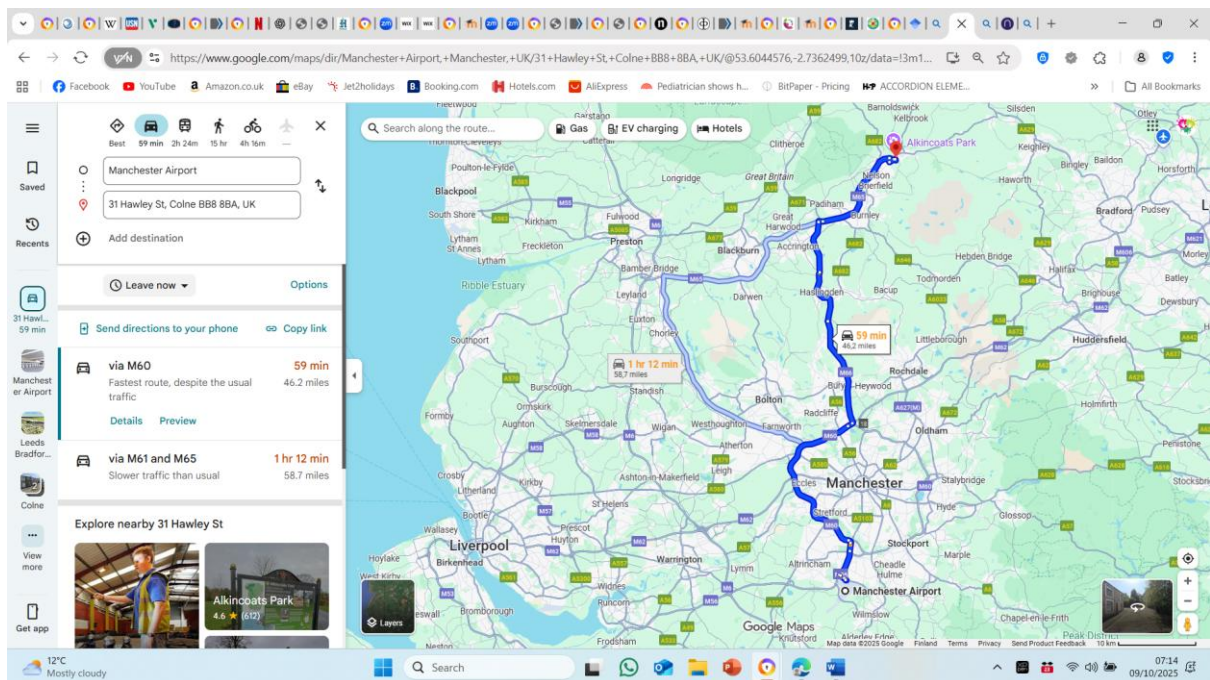
10 minutes by bus, 20 minutes walking (downhill to the accommodation, uphill to return). See first page for picture of walking from the train station (7 minutes).



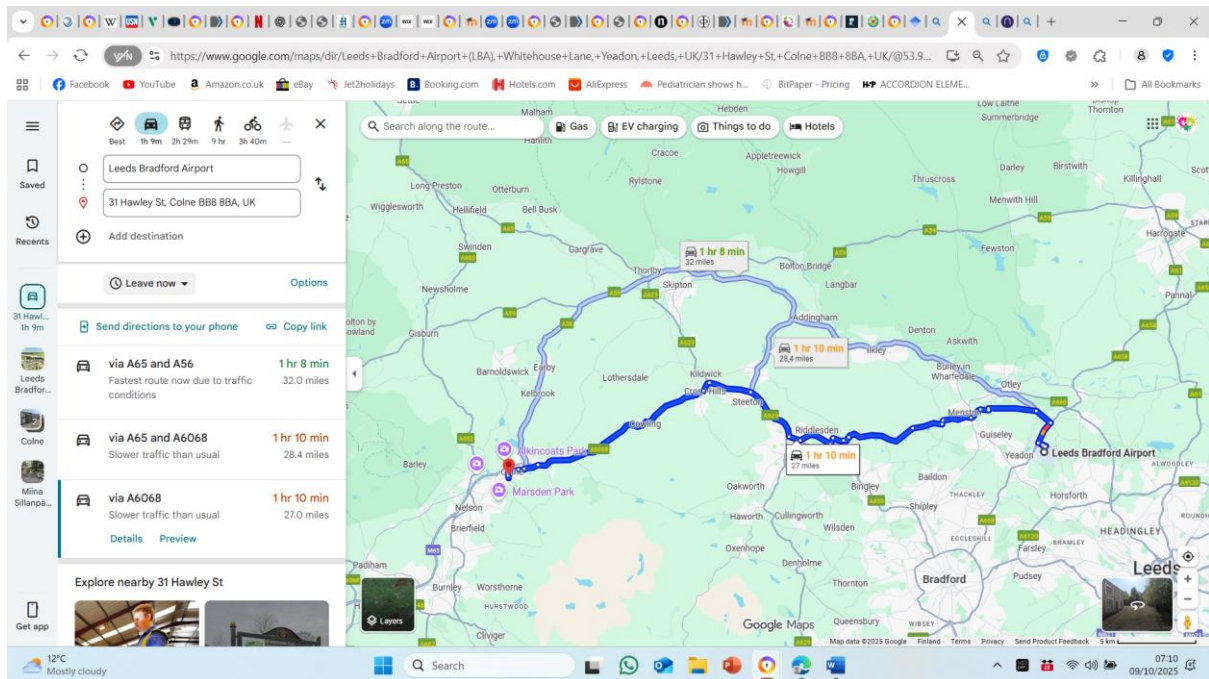
AIRPORTS:

MANCHESTER AIRPORT IS NEAREST, THEN LEEDS BRADFORD, THEN LIVERPOOL JOHN LENNON.

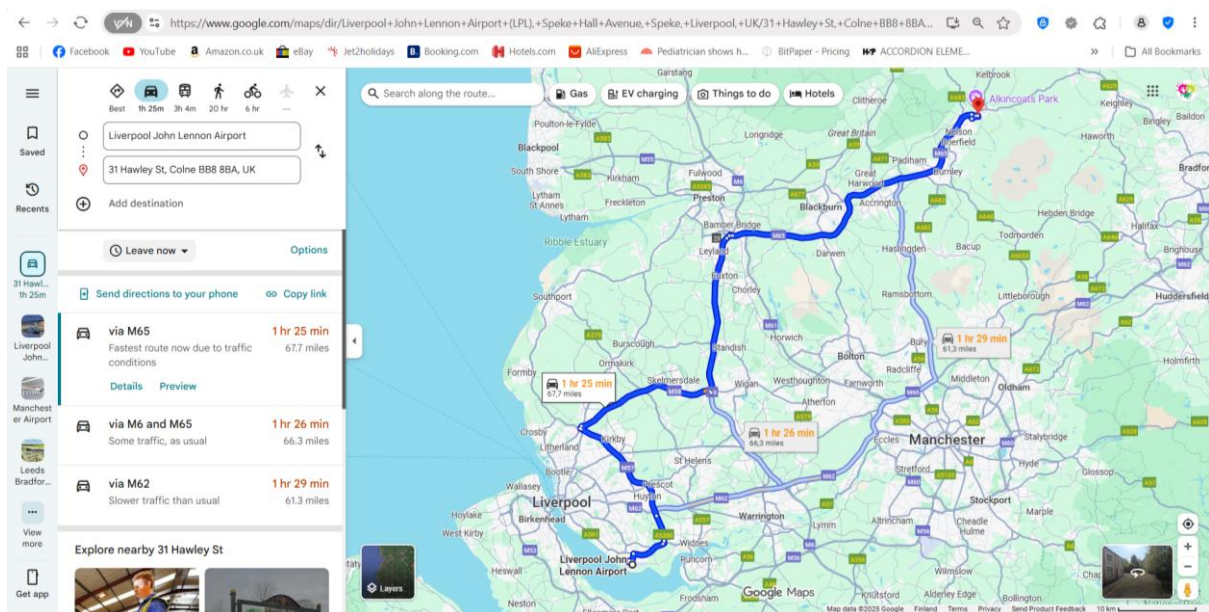
MANCHESTER AIRPORT BY ROAD / UBER / CAR HIRE



LEEDS AIRPORT BY ROAD / UBER / CAR HIRE:



LIVERPOOL AIRPORT BY ROAD / UBER / CAR HIRE:



ARRIVING AT THE ACCOMMODATION

There will be a key box on the door, please enter code (****) to get key. There is one set of keys, so once more than one student / participant is there, and go out separately, you will have to manage letting each other in and out. Code will be given in the whatsapp group created for the weekend participants.

THE ACCOMMODATION ITSELF

The lectures are held in the downstairs kitchen/ living space, and at the end of the day, seating / couches / futons can be spread back out for evening use.

The bedrooms – there are 3 bedrooms, one is a twin, and the other two are triples. We will have to allocated rooms by sex or by couples (if you are attending as a couple, for example. All beds are singles, and 2 of the beds are bunk beds (so you must climb up) and 2 of the beds are narrow beds – so more suitable for the small amongst us!). There is one bathroom currently, so we will all need to work around that. I live elsewhere and will attend each day.

You can arrive the day before your course starts and stay over on the Sunday if you require. Arrival and departure times are up to you, and if you need to leave early that's fine. Free accommodation is from Thursday evening to Sunday evening. If you wish to stay for a trip around the lovely Pendle area, then additional nights outside of this are £25 per person per night, payable in cash.

Catering:

I will provide basic tea / coffee / full fat cows milk, and basic condiments (sugar, oil, salt pepper etc) and cleaning materials / toilet rolls. Anything else is up to you. Please bring your own towels, although I will have spare if you forget. Bedding is provided. You are free to bring your own if you want. There are local convenience stores / Onestop within 5 -10 mins walk, and there are larger supermarkets if you have a car / feel like taking the bus. There are large Sainsburys in Colne, and an Asda back towards Nelson. Colne has plenty of pubs and takeaways and some general sit down restaurants. **YOU CANT COOK IN THE PROPERTY / KITCHEN IS EQUIPED FOR SELF-CATERING.**

Downstairs





Bedroom One





Bedroom Two



Bedroom Three



Bathroom

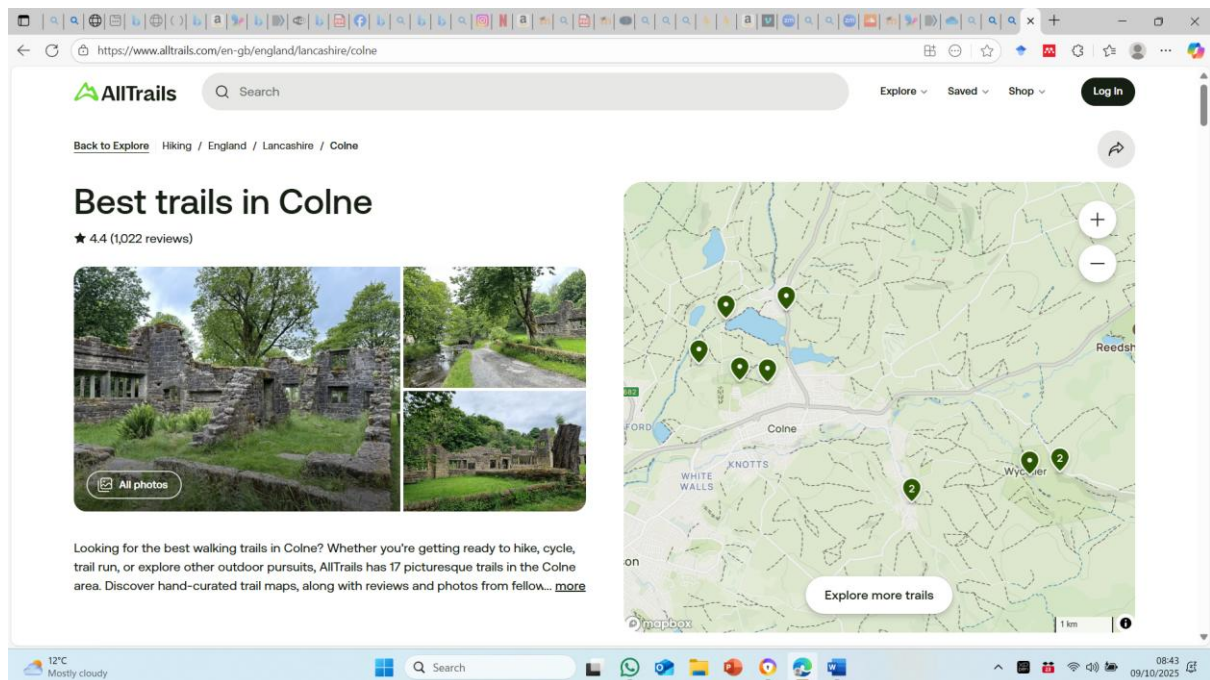


Walking Routes

There are several great walks nearby for the adventurous (and accessible / achievable in early evening if you have a car to the start of some of them).

<https://www.walkingbritain.co.uk/best-walks-near-Colne>

<https://www.alltrails.com/en-gb/england/lancashire/colne>



Canal Walks

Colne / Nelson / Barrowford / Foulridge are on the Leeds and Liverpool Canal, and there are many access points in the local area.

<https://www.visitpendle.com/things-to-do/pendle-canal-walk-no-1-p839690>



History – Pendle Witches

A screenshot of a web browser displaying the Wikipedia article titled "Pendle witches". The browser's address bar shows the URL "https://en.wikipedia.org/wiki/Pendle_witches". The Wikipedia logo and search bar are at the top. The article content includes a summary of the 1612 trials, a list of contents on the left, and a sidebar on the right with appearance settings. A small image titled "Pendle Witch Hunts" is also visible.

Pendle witches

From Wikipedia, the free encyclopedia

The trials of the **Pendle witches** in 1612 are among the most famous *witch trials* in English history, and some of the best recorded of the 17th century. The twelve accused lived in the area surrounding *Pendle Hill* in *Lancashire*, and were charged with the murders of ten people by the use of *witchcraft*. All but two were tried at *Lancaster Assizes* on 18–19 August 1612, along with the *Samlesbury witches* and others, in a series of trials that have become known as the *Lancashire witch trials*. One was tried at *York Assizes* on 27 July 1612, and another died in prison. Of the eleven who went to trial – nine women and two men – ten were found guilty and executed by hanging; one was found not guilty.

The official publication of the proceedings by the *clerk to the court*, Thomas Potts, in his *The Wonderfull Discoverie of Witches in the Countie of Lancaster*, and the number of witches hanged together – nine at Lancaster and one at York – make the trials unusual for England at that time. It has been estimated that all the English witch trials between the early 15th and early 18th centuries resulted in fewer than 500 executions; this series of trials accounts for more than two per cent of that total.

Six of the Pendle witches came from one of two families, each at the time headed by a woman in her eighties: Elizabeth Southerns (a.k.a. *Demdike*^[a]), her daughter Elizabeth Device, and her grandchildren James and Alizon Device; Anne Whittle (a.k.a. *Chattox*), and her daughter Anne Redferne. The others accused were Jane Bulcock and her son

Pendle Witch Hunts

A depiction of two accused: Old Chattox, and daughter Anne Redferne, walking through Pendle. From William Harrison Ainsworth's book *The Lancashire Witches*

Timespan	1612–1613
Location	Pendle Hill, England
Number of trials	11
Guilty	10

https://en.wikipedia.org/wiki/Pendle_witches

The Pendle Heritage Center is worth a visit.

<https://www.pendleheritage.co.uk/>